

# HOUSE & LAND

Sanctuary  
RANGE

STAY COOL WITH \$10,000 TOWARDS YOUR NEW HOME COOLING



ILLAWARRA 232

**\$996,000\***



4



2.5



2

TOTAL (sqsq)	24.97
TOTAL (m <sup>2</sup> )	231.96
WIDTH (m)	10.67
LENGTH (m)	17.03

**LOT 513 115 BAYVIEW RD, OFFICER VIC  
3809**

LAND: 603m<sup>2</sup> ESTATE: CARRINGTON ESTATE

### Features & Inclusions:

20mm Stone Benchtops

900mm Stainless Steel Appliances

Colorbond Roof

Developer Requirements Included

Ducted Heating

Generous site cost allowance

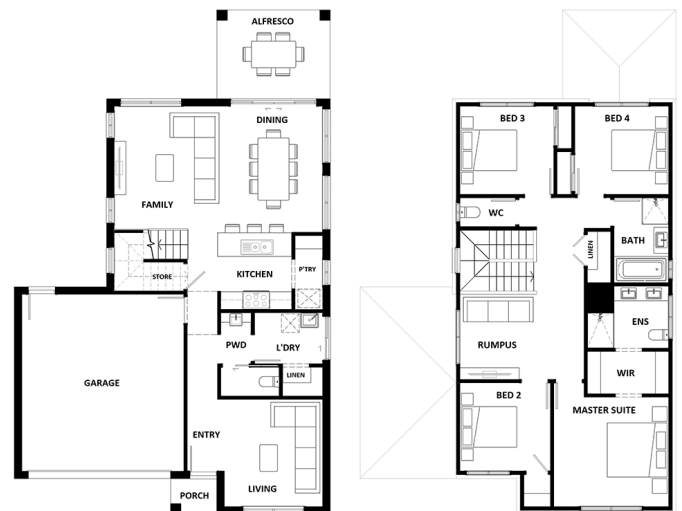
Carpet and tiles throughout

For more information contact:

**Aaron Atton 0473 145 374**

**aaron.a@hhbuild.com.au**

Builder Licence: DB-U 41204



\*Dimensions, photographs, floor plans and facade images are approximate and for illustrative purposes only. They are not drawn to scale. The dimensions provided of "width" and "length" are the actual dimensions of the completed house including alfresco areas (where applicable). It is the home owner's responsibility to ensure that all applicable council regulations and estate requirements are met. Subject to land availability, pricing and site costs unless advertised as a 'fixed price package'. Driveway size based on builder's preferred siting. Check with your local builder for builder's standard range and inclusions. Photographs may include optional features or items that are not supplied by Hotondo Homes. Hotondo Homes reserves the right to change plans, specifications, materials and suppliers without notice. For more information visit your local builder or hotondo.com.au.

**Hotondo  
Homes**