

HOUSE & LAND

Sanctuary
RANGE

STAY COOL WITH \$10,000 TOWARDS YOUR NEW HOME COOLING



ALAMEDA 255

\$994,000*



4



2.5



2

TOTAL (sqm)	27.46
TOTAL (m ²)	255.06
WIDTH (m)	10.43
LENGTH (m)	14.99

LOT 505 115 BAYVIEW RD, OFFICER VIC 3809

LAND: 601m² ESTATE: CARRINGTON ESTATE

Features & Inclusions:

20mm Stone Benchtops

2550mm Ceiling Height to Ground Floor Only

900mm Stainless Steel Appliances

Colorbond Roof

Developer Requirements Included

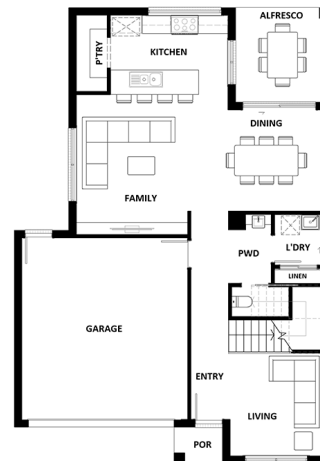
Ducted Heating

For more information contact:

Aaron Atton 0473 145 374

aaron.a@hhbuild.com.au

Builder Licence: DB-U 41204



*Dimensions, photographs, floor plans and facade images are approximate and for illustrative purposes only. They are not drawn to scale. The dimensions provided of "width" and "length" are the actual dimensions of the completed house including alfresco areas (where applicable). It is the home owner's responsibility to ensure that all applicable council regulations and estate requirements are met. Subject to land availability, pricing and site costs unless advertised as a 'fixed price package'. Driveway size based on builder's preferred siting. Check with your local builder for builder's standard range and inclusions. Photographs may include optional features or items that are not supplied by Hotondo Homes. Hotondo Homes reserves the right to change plans, specifications, materials and suppliers without notice. For more information visit your local builder or hotondo.com.au.